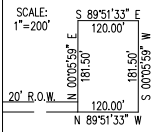


SECTIONS 22 TO 27 & 34 TO 36
T.8N., R.3E., S.L.B.&M.

IN WEBER COUNTY
SCALE 1" = 1200'

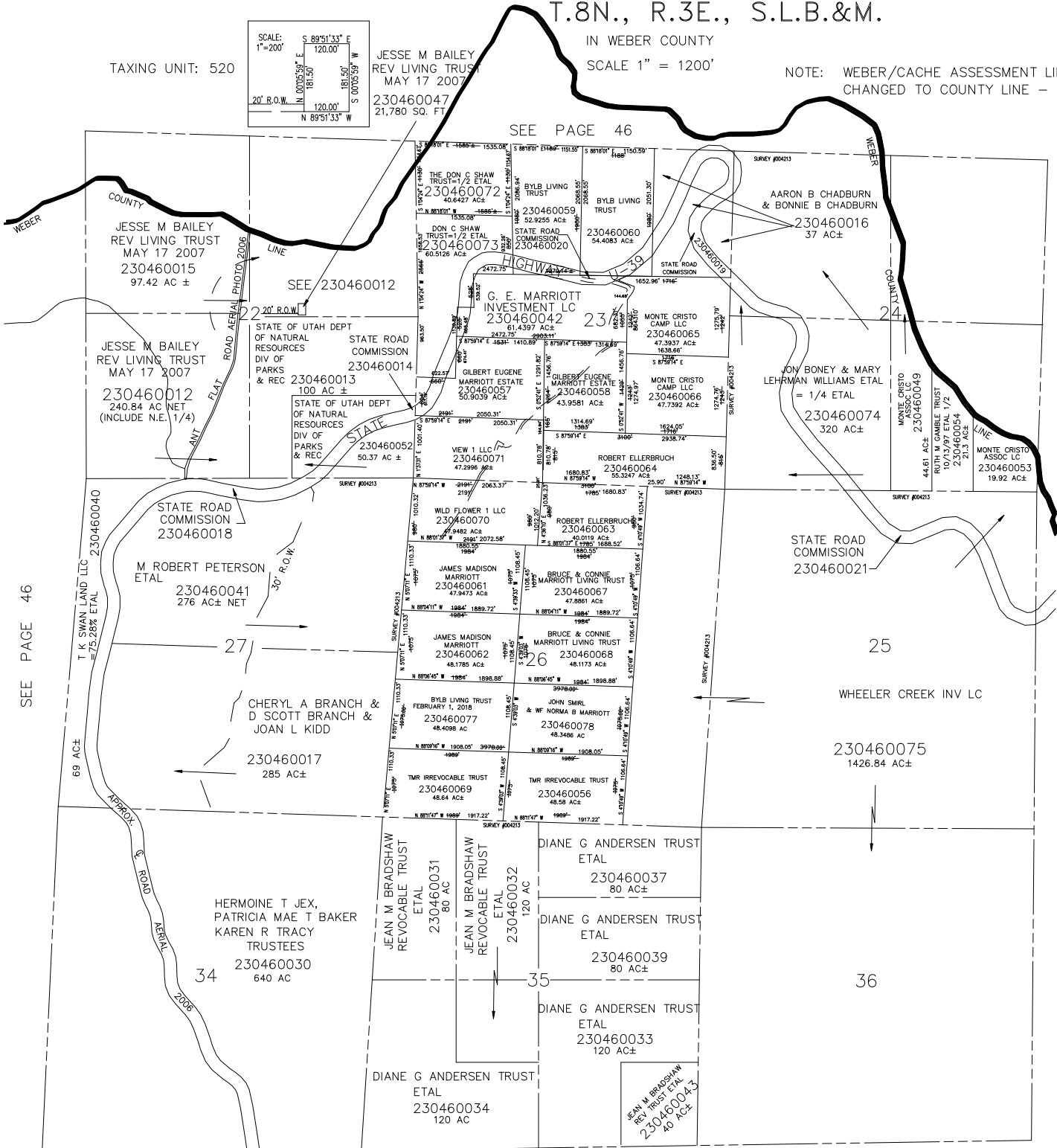
NOTE: WEBER/CACHE ASSESSMENT LINE
CHANGED TO COUNTY LINE - 1995

TAXING UNIT: 520



JESSE M BAILEY
REV LIVING TRUST
MAY 17 2007
230460047
21,780 SQ. FT.

SEE PAGE 46



SEE PAGE 13

SEE PAGE 46

SEE PAGE 46-2